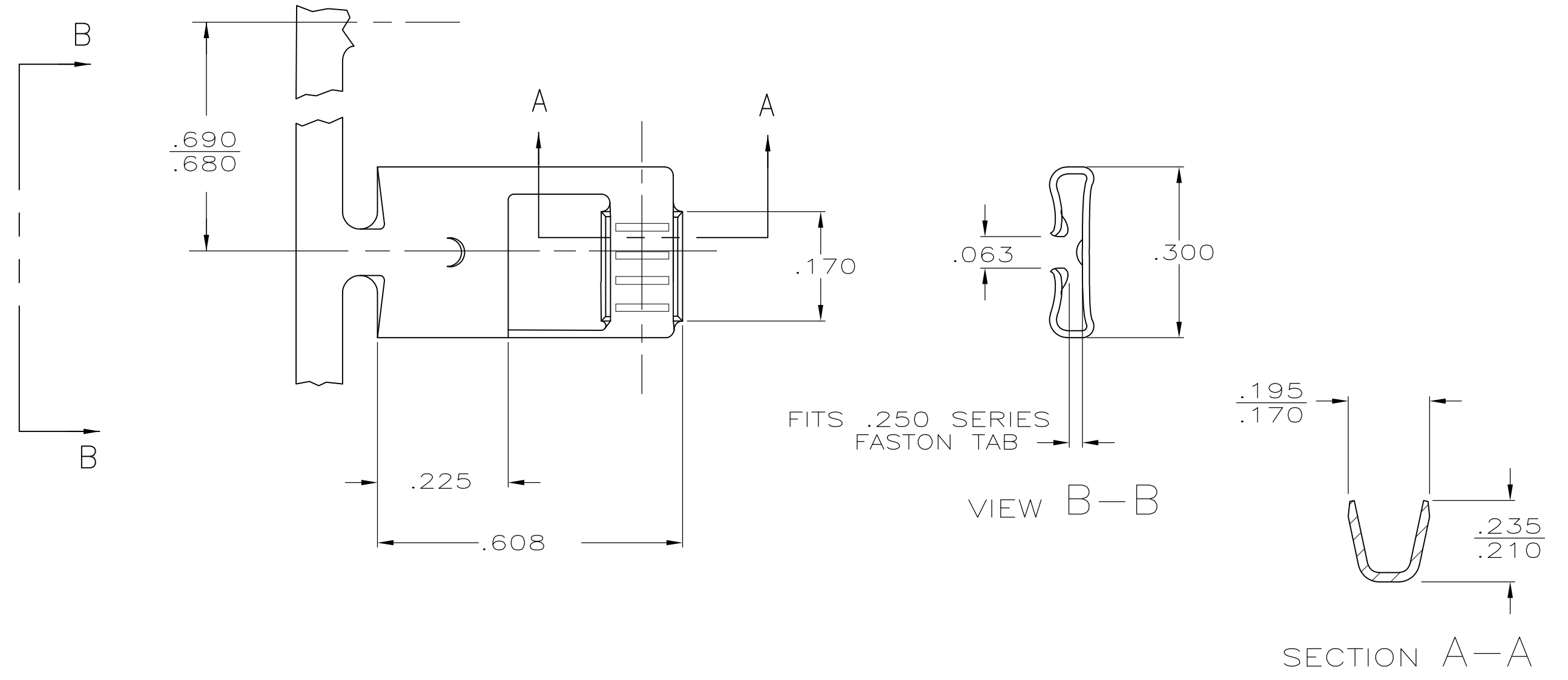


THIS DRAWING IS UNPUBLISHED. RELEASED FOR PUBLICATION  
 © COPYRIGHT - By - ALL RIGHTS RESERVED.

LOC	DIST	REVISIONS					
AF	50	P	LTR	DESCRIPTION	DATE	DWN	APVD
		M		REVISED PER ECR-12-013459	28NOV2012	KH	PD

1 CONTINUOUS STRIP ON REELS.



2 #14 STRANDED OR SOLID	.032	TIN	BRASS	60960-3
2 #12 STRANDED ONLY	.032		.018 BRASS	60960-2
12-10 STRANDED OR SOLID	.032	NICKEL	.018 STEEL	60960-1
WIRE SIZE	TAB THK ±.001	FINISH	MATERIAL	PART NO.

.220	F	.140	101	2 #14
			123	2 #12
			.111	10
			.093	12
STRIP LENGTH ±.015	TYPE	WIDTH	±.002 HEIGHT	WIRE
WIRE BARREL CRIMP				

THIS DRAWING IS A CONTROLLED DOCUMENT.

DIMENSIONS: INCHES

TOLERANCES UNLESS OTHERWISE SPECIFIED:

0 PLC	± -
1 PLC	± -
2 PLC	± -
3 PLC	± .015
4 PLC ANGLES	± - ± -

MATERIAL: - FINISH: -

DWN: JR RUTH 10/9/85  
 CHK: G YETTER 10/9/85  
 APVD: C MEYERS 10/9/85  
 PRODUCT SPEC: -  
 APPLICATION SPEC: 114-2079  
 WEIGHT: -

**STE** TE Connectivity

NAME: .250 SERIES FLAG FASTON RECEPTACLE

SIZE: A3	CAGE CODE: 00779	DRAWING NO: C-60960	RESTRICTED TO: -
----------	------------------	---------------------	------------------

CUSTOMER DRAWING SCALE: 4:1 SHEET: 1 OF 1 REV: M